

9380 Carroll Park Drive, San Diego, CA 95032
Phone: (858)731-9400 - Fax (858)731-9499

BOARD NUMBER:

PE42546/PE42548 EVK Board

SCHEMATIC NUMBER:

(DOC - 111032)

PART NUMBER:

PRT-82569

REV:

03

THIS DOCUMENT CONTAINS INFORMATION PROPRIETARY
TO PSEMI A MURATA COMPANY. THE INFORMATION IN
THIS DOCUMENT IS NOT TO BE USED OR DUPLICATED
IN ANY MANNER WITHOUT THE PRIOR APPROVAL
OF PSEMI, INC.

CAD REF ONLY
DATA REVISION

PCB: 01
SCH: 01
MEC: 01

DESIGNER:

M. MOREY 03/25/2024
858-731-0983
mmorey@psemi.com

ENGINEER:

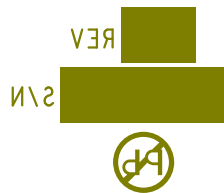
R.ALIDIO


LAYER:

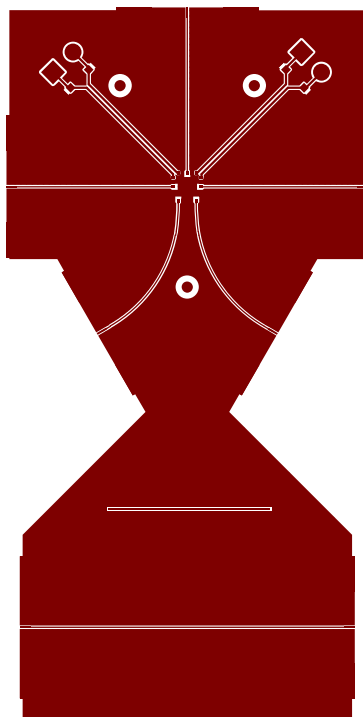
SOLDER MASK (SECONDARY SIDE)

GERBER:

PRT-82569-03_BM.pho



 A Murata Company 9380 Carroll Park Drive, San Diego, CA 95032 Phone: (858)731-9400 - Fax (858)731-9499		BOARD NUMBER: PE42546/PE42548 EVK Board		
SCHEMATIC NUMBER: (DOC - 111032)		PART NUMBER: PRT-82569		REV: 03
THIS DOCUMENT CONTAINS INFORMATION PROPRIETARY TO PSEMI A MURATA COMPANY. THE INFORMATION IN THIS DOCUMENT IS NOT TO BE USED OR DUPLICATED IN ANY MANNER WITHOUT THE PRIOR APPROVAL OF PSEMI, INC.	CAD REF ONLY DATA REVISION	DESIGNER: M. MOREY 03/25/2024 858-731-0983 mmorey@psemi.com		ENGINEER: R.ALIDIO -----
	PCB: 01 SCH: 01 MEC: 01	LAYER: SILKSCREEN (SECONDARY SIDE)		GERBER: PRT-82569-03_BS.pho



9380 Carroll Park Drive, San Diego, CA 95032
Phone: (858)731-9400 - Fax (858)731-9499

BOARD NUMBER:

PE42546/PE42548 EVK Board

SCHEMATIC NUMBER:

(DOC - 111032)

PART NUMBER:

PRT-82569

REV:

03

THIS DOCUMENT CONTAINS INFORMATION PROPRIETARY
TO PSEMI A MURATA COMPANY. THE INFORMATION IN
THIS DOCUMENT IS NOT TO BE USED OR DUPLICATED
IN ANY MANNER WITHOUT THE PRIOR APPROVAL
OF PSEMI, INC.

CAD REF ONLY
DATA REVISION

PCB: 01
SCH: 01
MEC: 01

DESIGNER:

M. MOREY 03/25/2024
858-731-0983
mmorey@psemi.com

ENGINEER:

R.ALIDIO

LAYER:

LAYER 1 (PRIMARY SIDE)

GERBER:

PRT-82569-03_L1.pho



9380 Carroll Park Drive, San Diego, CA 95032
Phone: (858)731-9400 - Fax (858)731-9499

BOARD NUMBER:

PE42546/PE42548 EVK Board

SCHEMATIC NUMBER:

(DOC - 111032)

PART NUMBER:

PRT-82569

REV:

03

THIS DOCUMENT CONTAINS INFORMATION PROPRIETARY
TO PSEMI A MURATA COMPANY. THE INFORMATION IN
THIS DOCUMENT IS NOT TO BE USED OR DUPLICATED
IN ANY MANNER WITHOUT THE PRIOR APPROVAL
OF PSEMI, INC.

CAD REF ONLY
DATA REVISION

PCB: 01
SCH: 01
MEC: 01

DESIGNER:

M. MOREY 03/25/2024
858-731-0983
mmorey@psemi.com

ENGINEER:

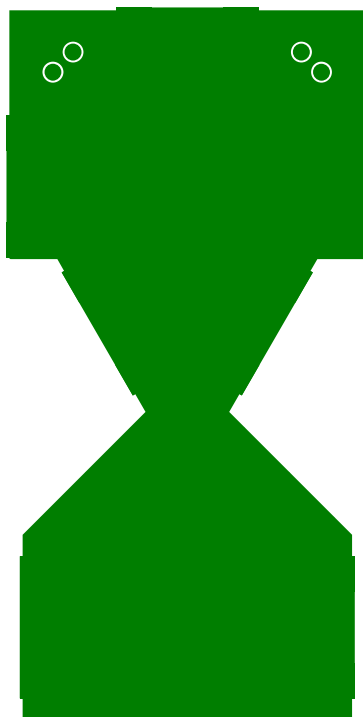
R.ALIDIO

LAYER:

LAYER 2 (GND PLANE)

GERBER:

PRT-82569-03_ L2.pho



9380 Carroll Park Drive, San Diego, CA 95032
Phone: (858)731-9400 - Fax (858)731-9499

BOARD NUMBER:
PE42546/PE42548 EVK Board

SCHEMATIC NUMBER:
(DOC - 111032)

PART NUMBER:
PRT-82569

REV:
03

THIS DOCUMENT CONTAINS INFORMATION PROPRIETARY
TO PSEMI A MURATA COMPANY. THE INFORMATION IN
THIS DOCUMENT IS NOT TO BE USED OR DUPLICATED
IN ANY MANNER WITHOUT THE PRIOR APPROVAL
OF PSEMI, INC.

CAD REF ONLY
DATA REVISION

PCB: 01
SCH: 01
MEC: 01


DESIGNER:
M. MOREY 03/25/2024
858-731-0983
mmorey@psemi.com

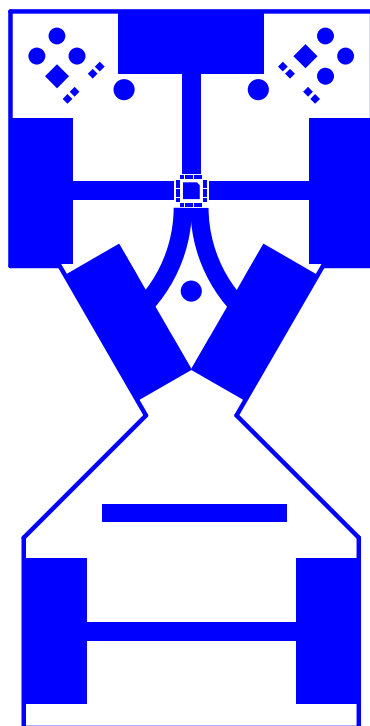
ENGINEER:
R.ALIDIO

LAYER:
LAYER 3 (GND PLANE)

GERBER:
PRT-82569-03_ L3.pho



 A Murata Company 9380 Carroll Park Drive, San Diego, CA 95032 Phone: (858)731-9400 - Fax (858)731-9499		BOARD NUMBER: PE42546/PE42548 EVK Board			
		SCHEMATIC NUMBER: (DOC - 111032)		PART NUMBER: PRT-82569	REV: 03
<small>THIS DOCUMENT CONTAINS INFORMATION PROPRIETARY TO PSEMI A MURATA COMPANY. THE INFORMATION IN THIS DOCUMENT IS NOT TO BE USED OR DUPLICATED IN ANY MANNER WITHOUT THE PRIOR APPROVAL OF PSEMI, INC.</small>	CAD REF ONLY DATA REVISION PCB: 01 SCH: 01 MEC: 01	DESIGNER: M. MOREY 03/25/2024 858-731-0983 mmorey@psemi.com		ENGINEER: R.ALIDIO	
				LAYER: LAYER 4 (SECONDARY SIDE)	
				GERBER: PRT-82569-03_ L4.pho	



9380 Carroll Park Drive, San Diego, CA 95032
Phone: (858)731-9400 - Fax (858)731-9499

BOARD NUMBER:

PE42546/PE42548 EVK Board

SCHEMATIC NUMBER:

(DOC - 111032)

PART NUMBER:

PRT-82569

REV:

03

THIS DOCUMENT CONTAINS INFORMATION PROPRIETARY
TO PSEMI A MURATA COMPANY. THE INFORMATION IN
THIS DOCUMENT IS NOT TO BE USED OR DUPLICATED
IN ANY MANNER WITHOUT THE PRIOR APPROVAL
OF PSEMI, INC.

CAD REF ONLY
DATA REVISION

PCB: 01
SCH: 01
MEC: 01

DESIGNER:

M. MOREY 03/25/2024
858-731-0983
mmorey@psemi.com

ENGINEER:

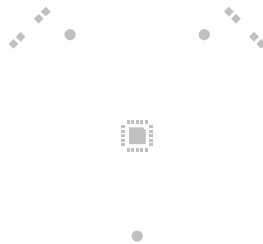
R.ALIDIO

LAYER:

SOLDER MASK (PRIMARY SIDE)

GERBER:

PRT-82569-03_ TM.pho



9380 Carroll Park Drive, San Diego, CA 95032
Phone: (858)731-9400 - Fax (858)731-9499

BOARD NUMBER:

PE42546/PE42548 EVK Board

SCHEMATIC NUMBER:

(DOC - 111032)

PART NUMBER:

PRT-82569

REV:

03

THIS DOCUMENT CONTAINS INFORMATION PROPRIETARY
TO PSEMI A MURATA COMPANY. THE INFORMATION IN
THIS DOCUMENT IS NOT TO BE USED OR DUPLICATED
IN ANY MANNER WITHOUT THE PRIOR APPROVAL
OF PSEMI, INC.

CAD REF ONLY
DATA REVISION

PCB: 01
SCH: 01
MEC: 01

DESIGNER:

M. MOREY 03/25/2024
858-731-0983
mmorey@psemi.com

ENGINEER:

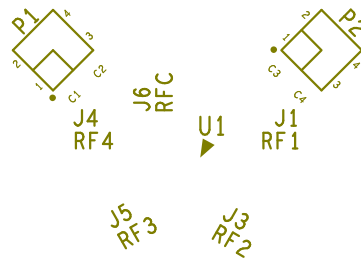
R.ALIDIO

LAYER:

SOLDER PASTE (PRIMARY SIDE)

GERBER:

PRT-82569-03_TP.pho



1X CAL

J7

J8

THRUCAL



9380 Carroll Park Drive, San Diego, CA 95032
Phone: (858)731-9400 - Fax (858)731-9499

BOARD NUMBER:

PE42546/PE42548 EVK Board

SCHEMATIC NUMBER:

(DOC - 111032)

PART NUMBER:

PRT-82569

REV:

03

THIS DOCUMENT CONTAINS INFORMATION PROPRIETARY
TO PSEMI A MURATA COMPANY. THE INFORMATION IN
THIS DOCUMENT IS NOT TO BE USED OR DUPLICATED
IN ANY MANNER WITHOUT THE PRIOR APPROVAL
OF PSEMI, INC.

CAD REF ONLY
DATA REVISION

PCB: 01
SCH: 01
MEC: 01

DESIGNER:

M. MOREY 03/25/2024
858-731-0983
mmorey@psemi.com

ENGINEER:

R.ALIDIO

LAYER:

SILKSCREEN (PRIMARY SIDE)

GERBER:

PRT-82569-03_TS.pho